

THIS IS
WHERE
YOU BUILD
WHAT'S NEXT

Approved By



AICTE, New Delhi



Govt. of Karnataka

Affiliated To



Bangalore University

INDEX

INTRODUCTION & LEADERSHIP

- About IZee Business School
- Vision, Mission & Core Philosophy
- Message from the Chairman
- Message from the Secretary & Treasurer
- Governing Council

WHY IZEE?

- Our Legacy of Excellence
- Awards, Rankings & Recognitions
- Our Partnership with IBM
- Global Affiliations
- IZee + IBM

PROGRAMS

- A little brief about the program and the duration.
- IBM Business Analytics with AI / ML

MBA Programs

- MBA + PGPM
- MBA + PGPM Global
- Hybrid MBA + PGPM
- Hybrid MBA + PGPM Global
- Hybrid MBA + PGPM With IBM Global Certification
- Hybrid MBA + PGPM Global With IBM Global Certification

UG Programs

- B.Com
- BBA
- BCA
- BBA Aviation
- LLB
- BBA LLB

INDUSTRY INTEGRATION

- Value-Added Certifications & Workshops
- Industrial Visits & Outbound Learning
- Guest Sessions by Industry Leaders
- Exclusively IZee

GLOBAL EXPOSURE

- International Study Tours
- Global Partner Institutions

CAREER DEVELOPMENT AND PLACEMENTS

- Career Advancement & Training Cell
- Placement Highlights
- The Ultimate IZee Hireathon
- Our Top Recruiters
- Corporate Testimonials
- Alumni Success Stories

CAMPUS LIFE @ IZEE

- Student Clubs & Committees
- New Beginnings @ IZee
- Events, Fests & Celebrations
- Celebrating Diversity
- Sports & Student Activities
- Graduation & Milestones

ADMISSIONS

- Eligibility & Selection Process
- Application Guidelines
- Scholarships & Financial Assistance

CLOSING

- Testimonials from Students & Parents
- FAQs
- Contact Information
- Campus Location & Map (QR Enabled)





About IZee

IZee Business School, Bengaluru a part of IZee Education Trust was established in **2009** with a bold vision to redefine management education in Bangalore. Built on the foundation of IZee Manpower, a premier recruitment organisation, it has grown into a dynamic centre for business learning—anchored in industry relevance, global exposure and leadership development.

Set on a sprawling campus along Bommasandra-Jigani Link Road, IZee leverages its unique location in India's Silicon Valley to offer students unparalleled access to corporate ecosystems, start-ups and emerging business hubs.

At IZee, we believe education is more than lectures - it's an immersive experience combining academic excellence, real-world projects and transformative personal growth. Through our industry-aligned curriculum, global certifications and vibrant campus community, we prepare graduates not just to join organisations, but to lead them.

***“Inspiring Minds to
Create Real Change”***





VISION

Our vision is to be a leading institution of higher education, known for our innovative programs, excellent faculty and staff, and commitment to social responsibility. We aim to prepare our graduates to be engaged and ethical citizens who are well-prepared to meet the challenges of the future.

OUR VALUES

Integrity at Heart
 Academic Excellence
 Diversity & Inclusion
 Innovation & Creativity
 Community Impact
 Student-Centric Approach

MISSION

Our mission is to provide high-quality education and support services that empower students to achieve their academic and career goals, and to serve as a hub for intellectual and cultural exchange in our community.

KEY HIGHLIGHTS ABOUT IZee BUSINESS SCHOOL



Legacy of Excellence

Offering degrees, postgraduate programs, MBA, and specialized education since 2004.



Powered by Expertise

Supported by IZee Manpower, a leading recruitment company bringing talent with opportunities.



Impressive Alumni Success

Over 1200 undergraduate and 800 postgraduate graduates, with 75,000+ placements achieved through IZee Manpower.



Global Edge

International certifications through partnerships with Omega Aviation Academy and Omega Training School, Greece, and links with Air Travel Academy, Cyprus.



Expert Faculty

A team of 100+ experienced academic and research professionals committed to nurturing future leaders.



Strong Industry Connections

Partnerships with top public and private sector organizations to create pathways for career success.



In Good Company

Write proud to be trained by some of the biggest names in the industry, including Accenture, Del. Infosys, Amazon, Flipkart, JP 300 other valued partners.

MESSAGE FROM THE CHAIRMAN

DR. ZAHEESH MOIDEEN

CHAIRMAN & FOUNDER

PROFILE

"Welcome to IZee! We are thrilled to have you join our community of learners. As you embark on your educational journey, remember you are not alone. Our faculty, staff, and fellow students are here to support you every step of the way.

Take advantage of all the opportunities that our college has to offer, from clubs and organizations to internships and research opportunities. Get involved, make connections, and discover your passions.

But remember, IZee is not just about academic success. It's also about personal growth, building relationships, and community contribution contributing to the community. So, make the most of your college experience by challenging yourself, trying new things, and embracing the diversity of perspectives and ideas you will encounter.

ONCE AGAIN, WELCOME TO OUR COLLEGE.

WE LOOK FORWARD TO SEEING YOU THRIVE!



MESSAGE FROM THE SECRETARY & TREASURER

DR. MURALI KRISHNA

MBA | (PHD) SECRETARY & MANAGING TRUSTEE
| IZEE GROUP OF INSTITUTIONS

It's a pleasure to welcome you to IZee Business School - a place where learning goes beyond classrooms. Our mission is to provide a supportive, enriching, and inspiring environment that helps you grow both academically and personally.

At IZee, you'll find opportunities to engage with experienced faculty, explore diverse programs, and discover your true potential. We encourage you to stay curious, ask questions, and immerse yourself fully in all that IZee offers.

We're proud to walk beside you in this journey of growth and transformation. Welcome to the IZee family - where your success is our shared vision.

PROFILE

ONCE AGAIN, WELCOME TO OUR COLLEGE.

WE WISH YOU ALL THE BEST AS YOU BEGIN

THIS EXCITING NEW JOURNEY.



MESSAGE FROM THE SECRETARY & TREASURER

LIMNESH VN

TREASURER | IZEE BUSINESS SCHOOL

It is with great pride and heartfelt warmth that I welcome you to IZee Business School - a place where ambition meets opportunity and potential is nurtured into excellence.

At IZee, Every initiative we take, every investment we make, is designed to create an environment where students can learn, grow, and lead. From state-of-the-art infrastructure to globally aligned programs, our goal is to ensure that every student is future-ready.

IZee is more than an institution — it's a community that nurtures ambition and celebrates achievement. We're proud to be a part of your journey toward success.

PROFILE

WELCOME TO THE IZEE FAMILY.

WE ARE EXCITED TO BE PART OF YOUR FUTURE.



**PROF R HARIVASUDEVAN**

Campus Director - Administration

At IZee, our mission is to shape capable, confident, and compassionate business leaders. We focus on practical learning, innovation, and industry exposure - ensuring every student graduates ready to take on real-world challenges with clarity and confidence.

Education at IZee is about transformation - turning knowledge into action and dreams into purpose. Our students are guided to think critically, lead ethically, and create meaningful impact in every sphere of life.

**DR SARASWATHI KUMBALE**

Principal

**DR MAHESH KUMAR KR**

Director - MBA Department

At IZee, we take pride in blending academic excellence with practical wisdom. Our programs are designed to prepare students not just for jobs, but for leadership - to innovate, inspire, and make a difference wherever they go.

Our focus goes beyond placements - we build professionals ready for dynamic industries. Through skill training, mentoring, and corporate exposure, we ensure every student is career-ready and future-focused.

**KARTHICK V**

Director - Admissions

**RANI SRINIVAS**

Director - Career Development Cell

We aim to nurture young minds with a strong academic foundation and the confidence to innovate. At IZee, learning extends beyond classrooms - it's about discovering potential and shaping it into success.



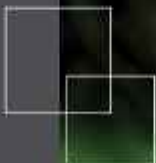


16+ YEARS

350+ RECRUITERS



20000+ STUDENTS



GOVERNING COUNSEL & ADVISORY BOARD

Dr. Zaheesh Moideen

Chairman & Founder | Zee Group of Institutions



Dr Abdul Rahiman

Former Vice Chancellor Kannur & Calicut Universities | Former Chairman Calicut Commission



Dr. Murali Krishna

Secretary & Managing Trustee | Zee Group of Institutions



Ramani Venkat

Sales Strategist Consultant & NLP Coach
| Former South India Sales Head - Hitachi



Dr. A.M Suresh

Founder & Managing Director | Disciples India Educational Resources Ltd



Dr. Saraswathi Kumbale

Principal



Dr Mahesh Kumar KR

Director - MBA Department



Steve Ernest

Vice President | Starlink



Dr. H.L. Vijaya Kumar

Former Principal | Anna Institute | Vogue Institute of Art & Design



Ioanna Sitropou

Director | Omega Aviation Academy, Greece, Europe



Prof. R Harivasudevan

Campus Director - Administration | Zee Business School



Raveen Shastry

Co-Founder | Mystra.com | Multiply Ventures



W I Z E



Why Free?





Our Legacy of Excellence

Founded Under the IZee Education Trust, the Institution Carries Over **15+ Years** of Academic Distinction and Corporate Expertise. With over **10,000+ Alumni** Across Industries and **500+ Recruitment Partners**, IZee continues to be a hub of Innovation and Leadership Learning.

Our legacy is defined by one principle - education that transforms potential into performance.

Rankings

34th
Best B-School
In India
Silicon India

11th
Best B-School
In India
Silicon India

Emerging
Best B-School
In India
Silicon India

**Global Icon
Award 2022**
Best B-School
In India
Silicon India



RANKED AMONGST THE TOP
100 B-SCHOOLS IN INDIA BY
TIMES OF INDIA

**THE TIMES
OF INDIA**

Awards



Accreditations and Associations



Global Affiliations

Our network of global educators and partner institutions makes IZee a truly international learning destination.





IZee × IBM

At IZee Business School, learning goes beyond textbooks. Our exclusive collaboration with IBM, one of the world's most respected technology leaders, integrates global technology expertise into management education — preparing students for a business world driven by data, innovation, and digital intelligence.

This partnership ensures that IZee students graduate with a strong foundation in technology-enabled management, supported by globally recognised learning frameworks.

New-Age Skills Students Develop

- Business Analytics & Data Interpretation
- Artificial Intelligence & Machine Learning (Foundational)
- Cloud Computing Concepts
- Cyber Security Awareness
- Automation & Digital Transformation
- Business Intelligence & Decision Science

These competencies strengthen students' ability to operate confidently in modern, technology-driven organisations.

Why the IBM Edge Matters

- Globally benchmarked learning standards
- Technology integrated into management thinking
- Skills aligned with future business roles
- Credentials recognised across industries and geographies

The IZee × IBM collaboration creates graduates who understand **business strategy, data, and digital systems** — a combination increasingly valued across sectors.

Learn with IBM. Lead with Confidence.



OUR PROGRAMS



IBM Business Analytics with AI / ML

MBA Programs

- MBA + PGPM
- MBA + PGPM Global
- Hybrid MBA + PGPM
- Hybrid MBA + PGPM Global
- Hybrid MBA + PGPM With IBM Global Certification
- Hybrid MBA + PGPM Global With IBM Global Certification

UG Programs

- B.Com
- BBA
- BCA
- BBA Aviation
- LLB
- BBA LLB

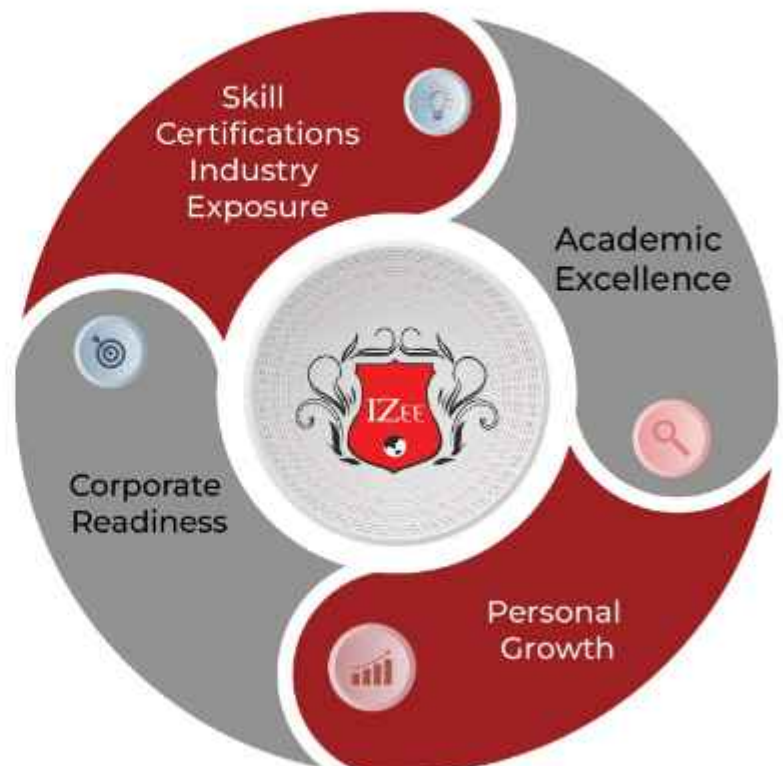
MBA PROGRAMS

Duration: 2 Years (Full-time)

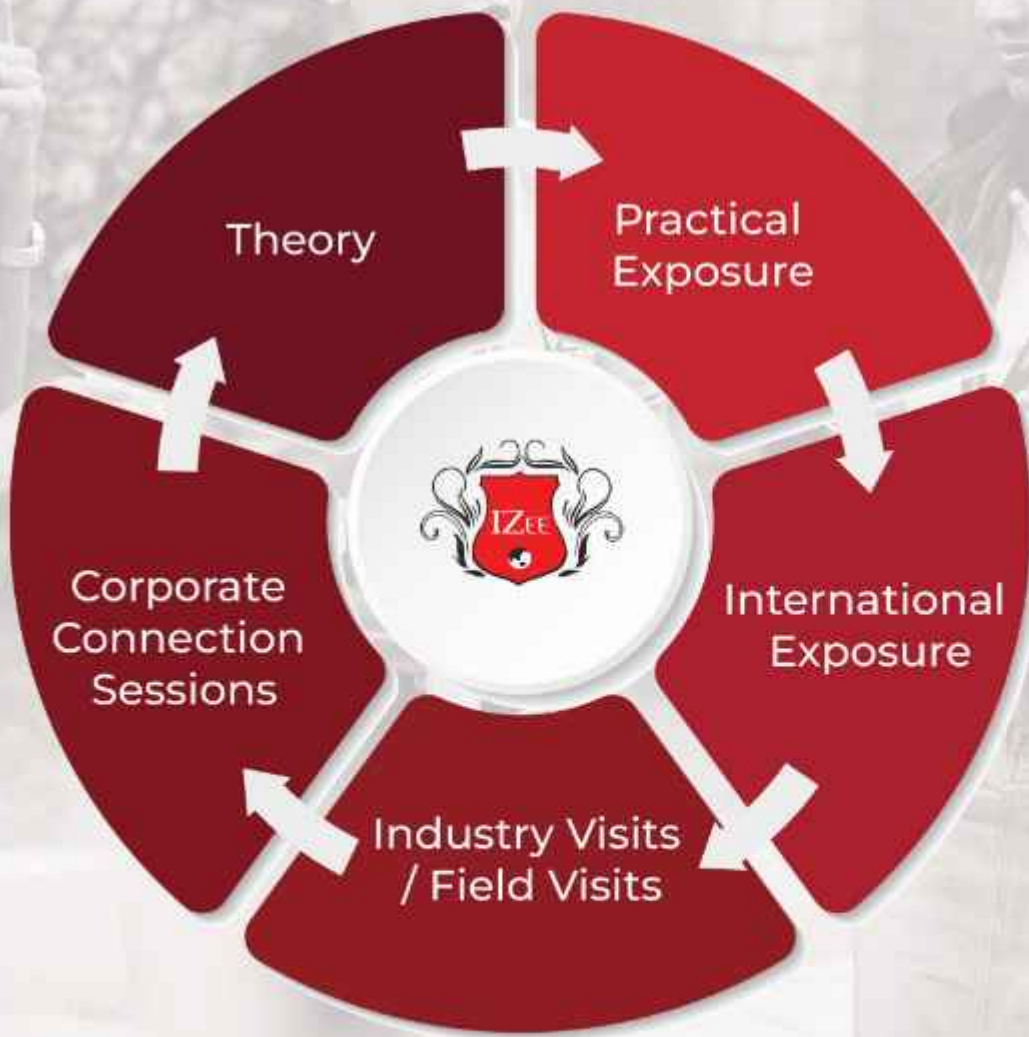
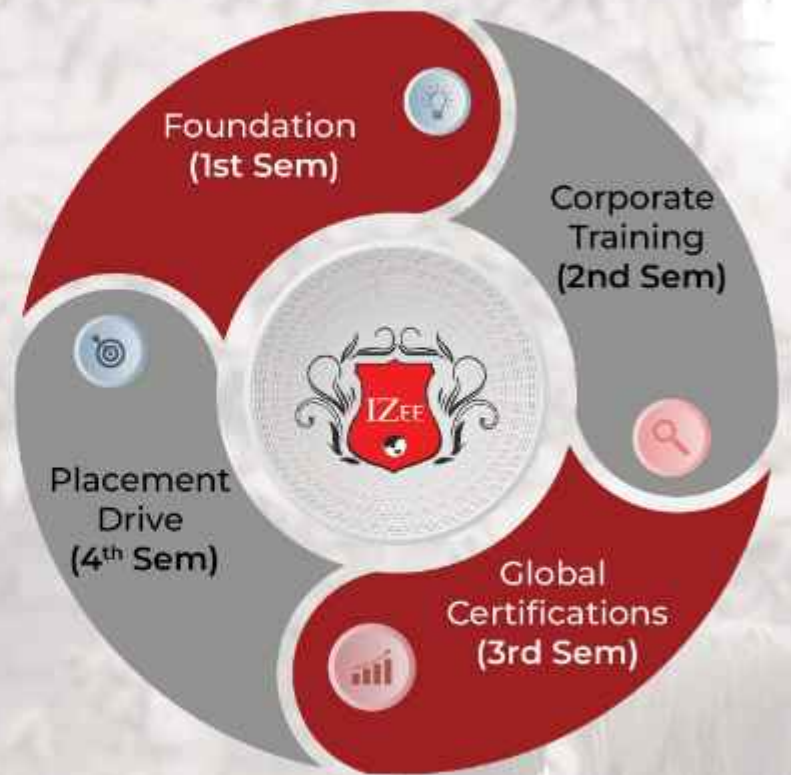
Reimagining Management to Build Global Thinkers

All MBA programs at IZee are designed to deliver academic excellence with global exposure. Students learn through live projects, internships, and global certifications that set them apart in today's competitive world.

360°
Career Development



You Career Timeline at IZee



Your Skill Integration

MBA + PGPM Global

Where Global Vision Meets Leadership Excellence

Highlights

- International Study Tour with Global Business Immersion
- Globally Aligned Curriculum with International Business Focus
- Dual Specialization for Strategic Career Advantage
- 8+ Industry-Recognized Certification Programs
- 10+ Premium Value-Added Training Modules
- Executive Grooming, Corporate Etiquette & Leadership LabS
- Dedicated Career Acceleration & Placement Mentorship
- Personal Laptop for Every Student to Enable Seamless Digital Learning

Hybrid MBA + PGPM Global with IBM Global Certification

The Future-Ready Global MBA with AI & Business Intelligence Edge

Highlights

- IBM Global Certification in Business Analytics with AI-ML
- Hands-on Training Using IBM Tools & Enterprise Technologies
- International Study Tour & Global Business Exposure
- Earn While You Learn + 1 Year Corporate Work Experience
- 8+ Premium Certification Programs
- 10+ Advanced Value-Added & Leadership Training Modules
- Live Capstone Projects & Real-Time Global Business Case Studies
- Laptop for Every Student for AI-Driven Learning & Innovation

Hybrid MBA + PGPM Global

Work. Earn. Learn. Lead Globally.

Highlights

- International Exchange Programs & Global Certifications
- Earn While You Learn — Financial Independence During Study
- 1 Year Structured Work Experience from 3rd Semester
- 8+ Industry-Integrated Certification Programs
- 10+ Advanced Value-Added Skill Enhancement Trainings
- Corporate Mentorship & Industry-Embedded Learning Model
- Global Career Pathways with International Business Exposure
- Personal Laptop for Every Student for Academic & Corporate Projects



IZee Law School

LLB (Bachelor of Law)

A comprehensive legal education program focusing on building analytical, reasoning, and advocacy skills.

Highlights

- Legal Research & Moot Court Practice
- Guidance from Industry Professionals
- Foundation for Corporate & Civil Law Careers

BBA + LLB (Integrated)

An integrated program combining management and law, shaping professionals who understand both business strategy and legal frameworks.

Highlights

- Dual Expertise in Business & Law
- Corporate Law & Compliance Focus
- Case-Based Learning & Legal Internships



*“Think. Connect.
Create impact.”*



UNDERGRADUATE PROGRAMS

Duration: 3 Years (Full-time)

IZee's UG programs prepare students to build strong academic foundations and real-world business acumen.

Each course combines theoretical knowledge with internships, leadership training, and global exposure to help students become industry-ready from day one.

For this Regular Guest Lectures and Workshops with business professionals and entrepreneurs are conducted.

Experiential learning dominance

30%

THEORY

50%

PRACTICAL LEARNING

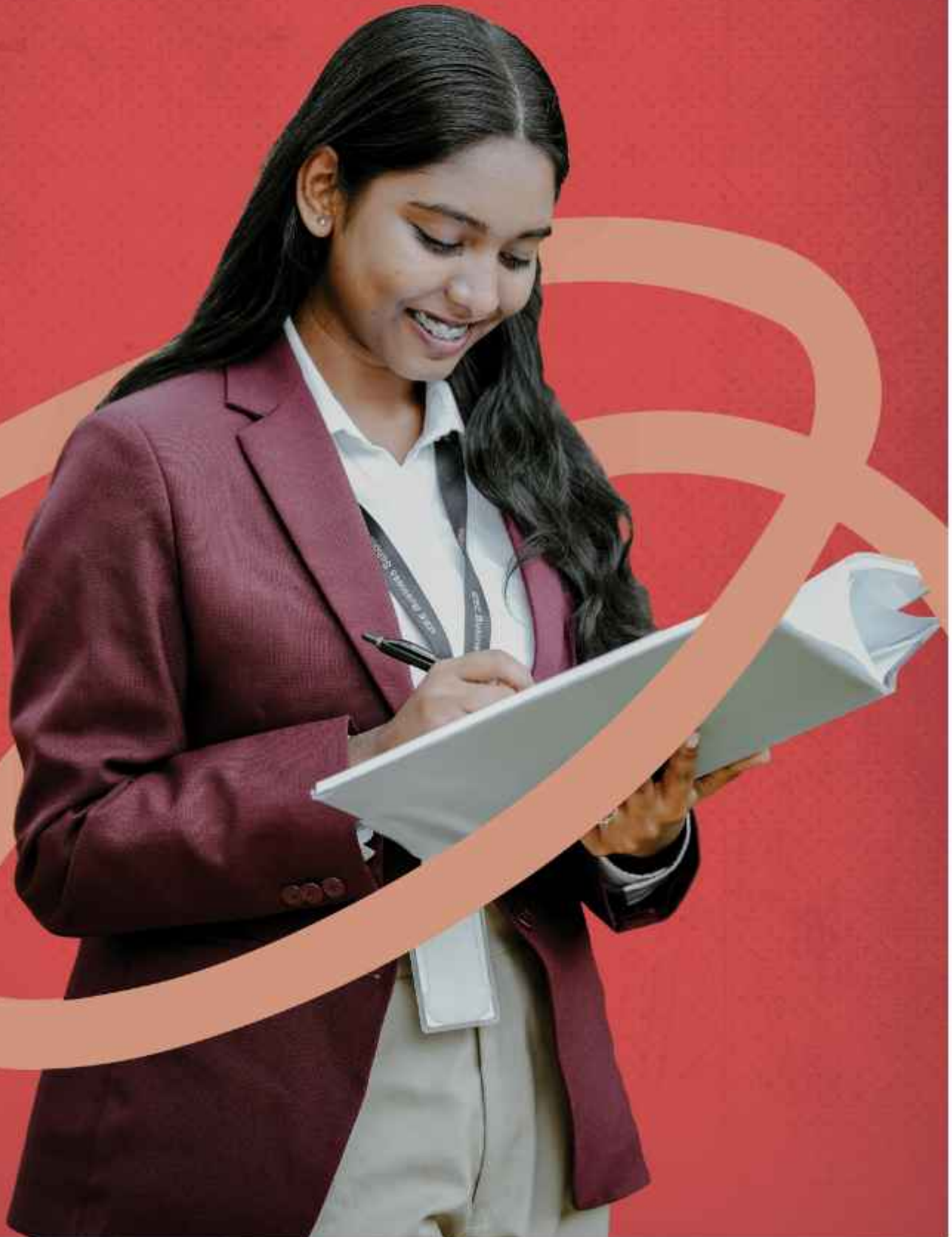
20%

INTERNSHIPS & PROJECTS

IZee Advantage Pyramid



*“Empowered to Lead.
Prepared to Excel.”*



BBA (Bachelor of Business Administration)

Learn. Lead. Succeed

Highlights

- Industry-integrate Specializations in Digital Marketing & Logistics
- Live projects, case studies & internships
- Focus on leadership, strategy & communication
- Continuous industry engagement & corporate exposure
- Career mentoring & placement support

B.Com (Bachelor of Commerce)

Decode Numbers. Define Success

Highlights

- Strong foundation in accounting, finance & taxation
- Practical learning in GST & digital accounting
- Industry expert sessions & financial exposure
- Analytical & decision-making skill development
- Career pathways in finance, banking & accounting

BCA (Bachelor of Computer Applications)

Code. Create. Innovate

Highlights

- Curriculum covering AI, ML, Cloud & Cybersecurity
- Hands-on projects, coding labs & practical learning
- Industry certifications & technology exposure
- Strong foundation in programming & software development
- Internship, mentorship & placement support

BBA in Aviation Management

Where Business Meets the Skies

Highlights

- Aviation-focused curriculum in airport & airline management
- Academic Collaboration with Airports Authority of India (AAI) offering real-world exposure to airport operations and infrastructure
- Professional Certification from CIAL Aviation Academy
- Experiential learning through Airport visits, MRO & industry exposure Career opportunities across airlines & airports



INTERNATIONAL STUDY TOURS Malaysia

IZee students participate in curated international study tours designed to offer first-hand exposure to global business practices.

Our annual Malaysia International Study Tour includes corporate visits, innovation hubs, manufacturing units, and cultural landmarks - giving students a 360° view of the dynamic economy of different countries.





**MANUFACTURING
UNIT VISIT**



GLOBAL NETWORKING



CORPORATE VISITS



EXPLORING
ROUND



INTERNATIONAL STUDY TOURS Thailand

The Thailand International Study Tour introduces students to one of Asia's most vibrant economies. Through industry visits, cultural immersion, and exposure to global business models, students gain valuable insights into tourism, retail, logistics, and service-led industries.





GLOBAL PARTNER INSTITUTIONS



LIMKOKWING UNIVERSITY
COLLEGE OF CREATIVE TECHNOLOGIES

International University
Partner, Malaysia



LINTESA
AVIATION
ACADEMY

International Aviation
Partner, Greece - Europe

CRAFTING CAREERS FOR THE CHANGING BUSINESS WORLD

At IZee, we bridge the gap between education and employment through focused career development programs.

Our Career Advancement & Training Cell (CATC) ensures every student graduates industry-ready - equipped with professional skills, global exposure, and the confidence to thrive in the corporate world.



IZee

***“Empowering Ideas.
Delivering Impact.”***



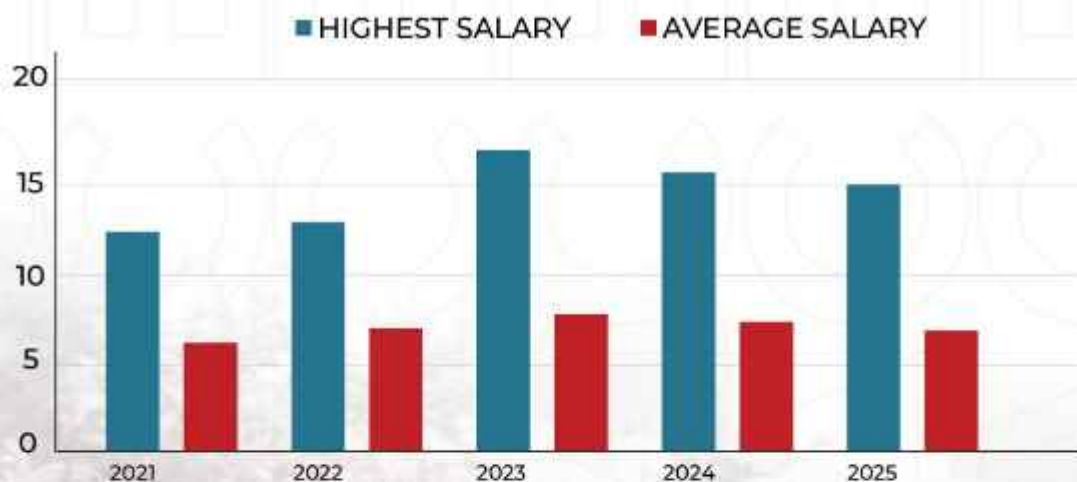
PLACEMENT HIGHLIGHTS

At IZee Group of Institutions, we go beyond academics to shape future leaders. Our commitment to career success is strengthened by **IZee Manpower**, our in-house recruitment company and a trusted name in India's talent industry. This powerful integration ensures every student gets access to exclusive job opportunities with leading organizations across sectors.

Through industry-driven training, mentorship programs, and global exposure, we prepare our students to meet the demands of today's dynamic corporate world. At IZee, we don't just help you land a job - we help you build a fulfilling and future-ready career.



| | | | |
|--------------------------------|--------------------------|--------------------------------------|-------------------------------------|
| 95% Placement Record | 350+ Companies | 18.7 LPA Highest Placement | 6-8 LPA Average Placement |
|--------------------------------|--------------------------|--------------------------------------|-------------------------------------|



“The Power of Collective learning”



SECTOR WISE PLACEMENTS

02%

Market
Research

01%

Trading

10%

Retail

02%

Tourism

1.5%

Tele
communication

08%

FMCG

5.4%

Entertainment

03%

Engineering

10%

Education

02%

E-Commerce

08%

Manufacturer

10.5%

IT

24%

BFSI

16%

Consulting

08%

Consumer
Services

THE ULTIMATE IZEE HIREATHON

At IZee Business School, placements aren't just an event - they're an ongoing celebration of opportunity. HIREATHON, our flagship 100-day placement marathon, redefines the way B-Schools connect students with the corporate world.

WHAT MAKES IZEE'S HIREATHON ONE-OF-A-KIND

100 CONTINUOUS DAYS OF PLACEMENTS

The only B-School with a structured, uninterrupted placement drive ensuring every student gets multiple opportunities to shine.

TOP GLOBAL & INDIAN RECRUITERS

From Fortune 500 brands to India's most dynamic corporates, HIREATHON connects students with world-class employers.

DIVERSE CAREER OPPORTUNITIES

Placements across industries
Consulting, IT, Finance, Marketing,
HR, Aviation, and Hospitality - with
highly competitive packages

REAL-TIME TRACKING & TRANSPARENCY

Every offer and selection is tracked
live, ensuring complete visibility for
students, faculty, and recruiters.

IZEE PLACEMENT
HIREATHON
100 DAYS **100** COMPANIES
2025 COHORT



OUR TOP RECRUITERS

At IZee, our strong industry connections open doors to global opportunities. Our students are recruited by top multinational corporations and leading Indian companies across diverse sectors including IT, Consulting, Finance, Marketing, Aviation, and Hospitality.


TCS TATA
CONSULTANCY
SERVICES


IBM

Google

J.P.Morgan

Broadridge

Flipkart

wipro

ICICI Bank

Raymond

HSBC

Myntra

HDFC BANK

AXIS BANK

Infosys

durofoam

JPMORGAN CHASE & CO.

Startek

indiamart

BLACKBUCK

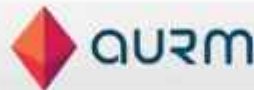
BAJAJ | Allianz

ANANDRATHI
INVESTMENT SERVICES


accenture

eduJantra
EDUCATION KA NAYA MANTRA


PLIX

DELL

aarm

EINFACH
SOLUTIONS


Altisource

IDA | International Development
Association


EY

BASIC®


DHL
EXPRESS


hgs

Berger

ATMECS GLOBAL
Passionate Minds™
A True R&D Services Company


aspire

AEGIS
Experience. Via make it easy.


NOBROKER

adroit®
CORPORATE SERVICES PVT. LTD


CURA
www.cura.in
Growth, Innovation, Reach

***“Build Tomorrow,
Starting Now.”***



CORPORATE

Thank you to the whole team of IZee for giving me the opportunity to spread the message of positivity to the students.



Deek Parassini

Founder & Director
LIAP Foundation



Dr. V Suresh Babu

Chairman & MD
Vasuki Group of Companies

Campus ambience is excellent, the students are polite and eager to learn.

Excellent staff & infrastructure, felt at ease with the students and had a beautiful time interacting with the students here.



Abhishek

Manager - Analytics & Student success
Business toys



Iqbal Singh

General Manager
Cafe Coffee Day

It was a pleasure speaking with the students of IZee. The session was very interactive and I wish the very best to all them for the future endeavours.

It was a wonderful experience to be between so many young & curious minds. Very nice campus. The faculty are very supportive & knowledgeable.



Lakshmi K R

Assistant Manager
EY

TESTIMONIALS

It was a pleasure to come & share my experience with IZee students. Had a very good time here.



Kamini Sawlani
Finance Manager
Mankara Technologies Pvt. Ltd.



P S Shylesh
Founder & Director
Vedic Bio Labs

Interacting with the students at IZee was refreshing. The level of curiosity, attentiveness and practical thinking shown by the students made the session truly engaging. It was encouraging to see how well they connect classroom concepts with real-world business perspectives.



Rachana Shenoy
Engineering Leader
Hewlett Packard Enterprises

I visited Izee Business school in Feb 2025 for a speaking engagement for MBA students. It was an extremely positive experience, with warm welcoming students, and the session was interactive and energetic with students asking relevant and insightful questions. I had an excellent, heartwarming experience delivering the talk and sharing my experience, making it a very meaningful use of my time.



Asitha Devangi
Curator & Head of Sales
C Krishniah Chetty Group of Jewellers

The session at IZee was energetic and meaningful. Students were well-prepared, confident and eager to understand industry realities beyond textbooks. Their questions reflected genuine interest in learning from real experiences, making the interaction very rewarding.

It was an engaging & exciting session with the students of IZEE. Loved their energetic questions & curiosity.



Mahesh Reddy
CEO
Gopiz2a

ALUMNI SUCCESS STORIES

Izee alumni are driving success across industries—leading teams, launching ventures, and excelling in global organizations. Their journeys reflect the institute's commitment to real-world learning, leadership, and lifelong growth.



SANKEPALLI MANASA
TRUE RIZE
MBA 2023-25



PREM KUMAR
METRO CASH & CARRY
MBA 2023-25



SOWMYA SANGAWAR
PROP TIMES
MBA 2023-25



SYED IFTEKAR HUSSAIN
PROP TIMES
MBA 2023-25



SREE SWETHA
K12 TECHNO SERVICES PVT
MBA 2023-25



VICTORIA B
COFFEE DAY GLOBAL LTD
MBA 2023-25



AROCKIYA RAJ
COFFEE DAY GLOBAL LTD
MBA 2023-25



RAMBA NISHMA
TRUE RIZE IQ STRATEGIC
MBA 2023-25



DURGA PRASAD
MUTHOOT FINANCE
MBA 2023-25



UTHAM NACHAPPA
COFFEE DAY
MBA 2023-25



DINESH KUMAR R
MUTHOOT FINANCE
MBA 2023-25



SAMADHI YASHWANTHI
BMRL
MBA 2023



**SAGAR BHADUR
SHRESTHA**
PROP TIMES
MBA 2023



XXXXXX
PROP TIMES
MBA 2023



JESHO JUDESON
CONNECTION ORACLE
MBA 2023



RAKESH KAVALI
COFFEE DAY
MBA 2023



SHAIK MOHAMMED RIZWAN



KULDEEP BASFORE
TRIVENI ENTERPRISE
MBA 2022-24



SHILPA KP

MBA 2022-24



SHILPA N

K J SYSTEMS
MBA 2022-24



SAI GOWTHAM

KOMANDDOR & CO
MBA 2022-24



GIRI MASTAN

PEOPLE EDUCATION
MBA 2023-25



ANJUSHA

BROADRIDGE
MBA 2022-24



ASHWATHI K

KOMANDDOR & CO
MBA 2023-24



KAVYA KONDAMIDI

VALTREE
MBA 2023-24



MONENDRA SINGH

TEACHNOOK
MBA 2022-24



MRIDULA

ANANDRATHI
MBA 2022-24



PRIYANKA

IDA AUTOMATION
MBA 2022-24



RIMI KALITHA

STARTEK
MBA 2022-24



SAI HARSHINI

TEACHNOOK



SANDEEPA PAUL

TSI



SAYANA

KHAVATH



VISMAYA RANJITH

IDA



CHANDANA DEGANI

PAYCHEX
MBA 2023-25



HARIHARAN

PAYCHEX
MBA 2023-25



JAYAKUMAR

PAYCHEX
MBA 2023-25



N BINOD

Narayana Health
MBA 2023-25



DHANUSH MN

Narayana Health
MBA 2023-25



JAYANT KUMBHRE

TECHGLOBAL
MBA 2023-25



GUNALAN S

PROP TIMES
MBA 2023-25



SIVA PRAKASH

TECHGLOBAL
MBA 2023-25

CAMPUS L

IZee's campus life thrives with energy and engagement. Our students excel in academics, creativity, leadership, and sports.

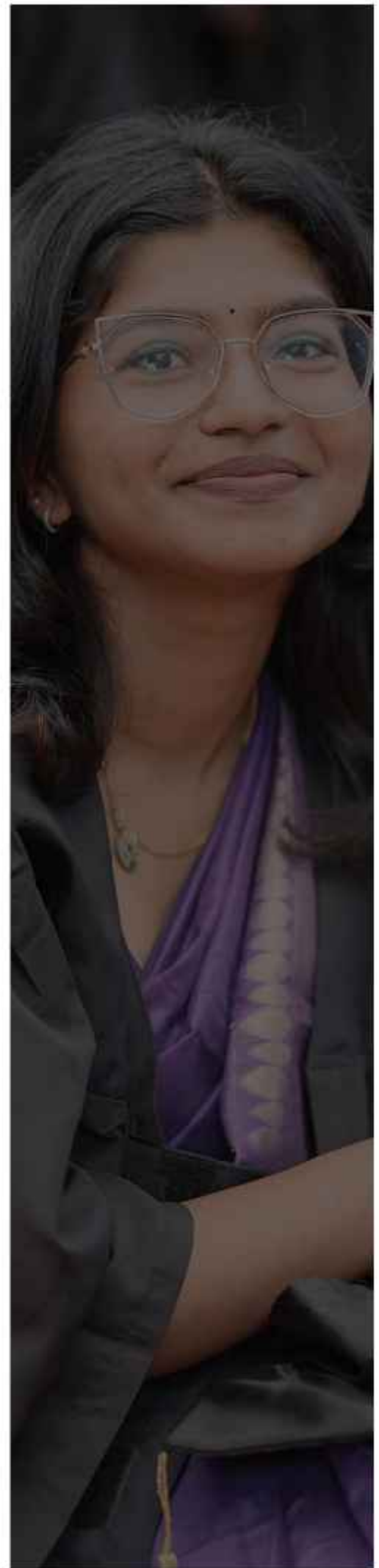
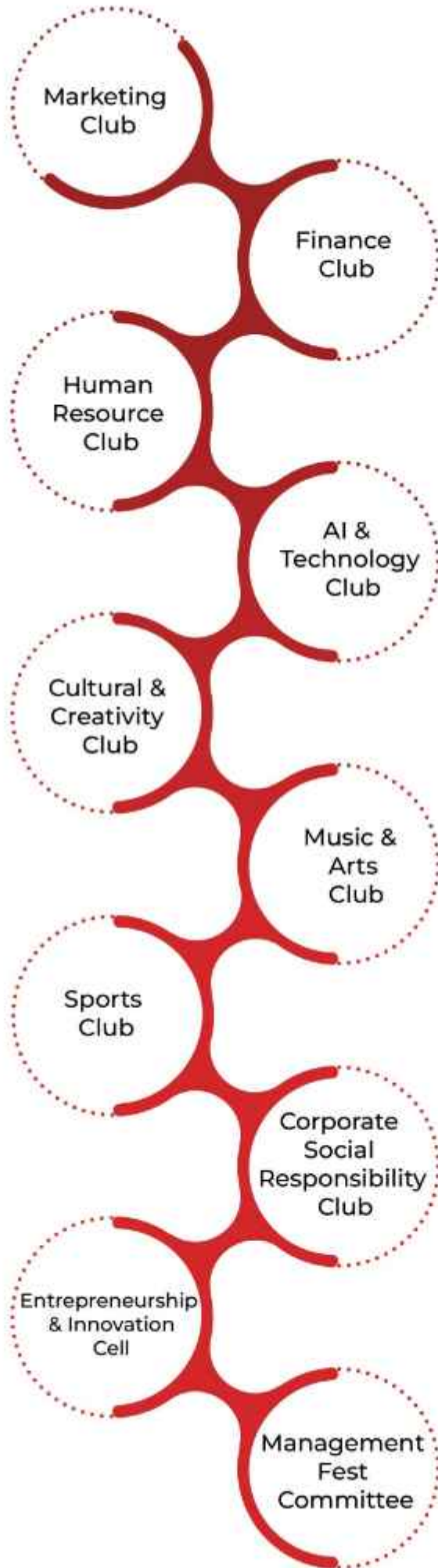


IFE @ IZee

ent clubs and committees ensure every learner grows through leadership, and fun.



CLUBS & SOCIETIES



New Beginnings at IZee

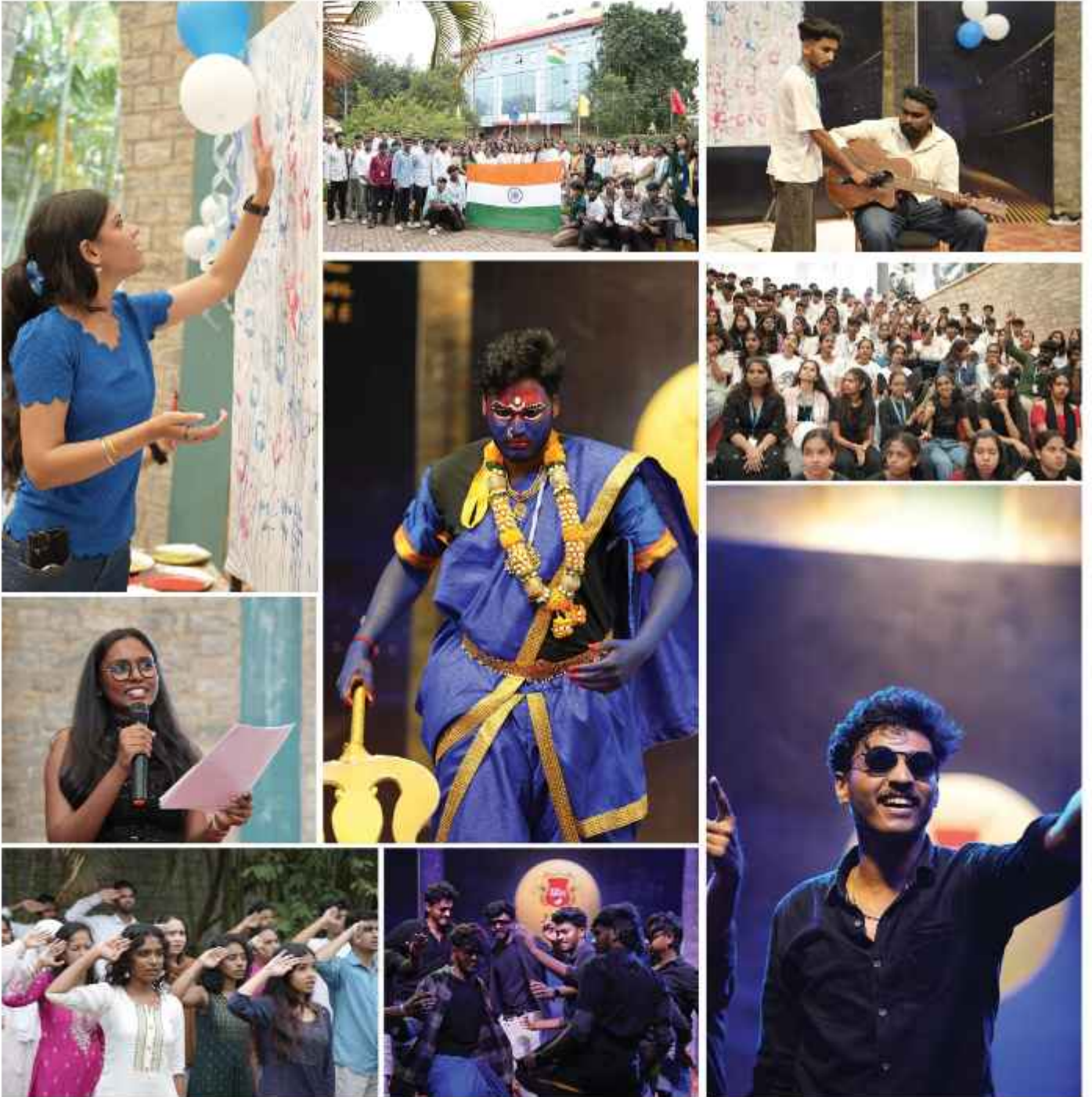
Orientation Week & Freshers' Day

Every new batch at IZee begins with energy, laughter, and purpose. Orientation week sets the tone - where students meet mentors, discover their campus, and feel the pulse of what's ahead. The freshers' celebrations that follow are pure IZee — vibrant, creative, and unforgettable.



Events, Fests & Celebrations

From Independence Day celebrations to celebrating Friendship Day, every event at IZee brings the community together. It's not just celebration - it's collaboration, culture, and connection. These moments remind students that growth also means belonging.



Sports

At IZee, sports aren't a side activity — they're part of who we are. From early morning football matches to all-out intercollegiate showdowns, the energy here is electric. Every game teaches teamwork, leadership, and the drive to keep pushing — on and off the field.



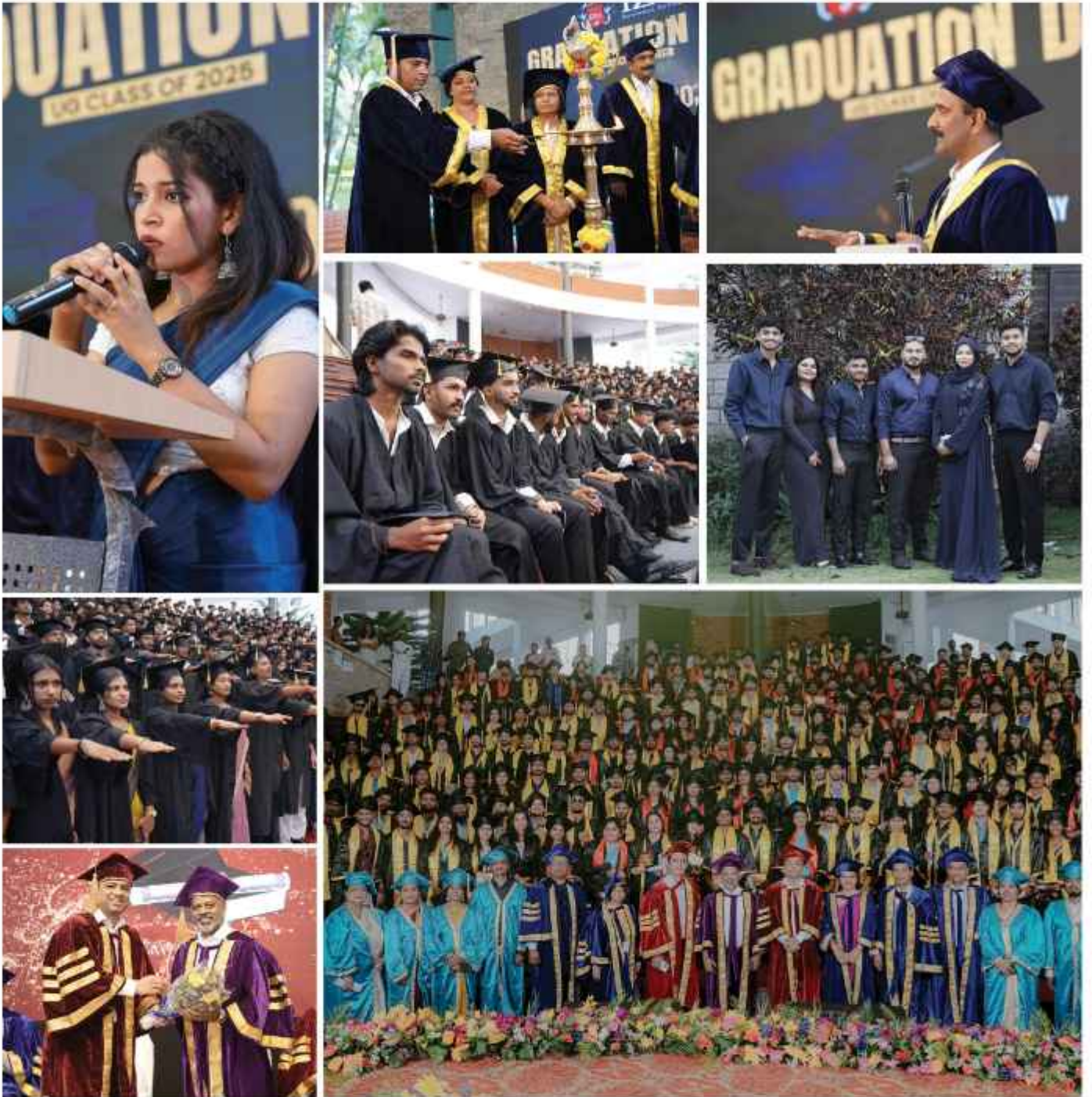
Celebrating Diversity in all Spheres

Whether it's Onam, Halloween, or a spontaneous Fun Day, IZee embraces diversity with warmth and creativity. Each celebration is a reflection of who we are - proud of our roots, yet open to the world.



Graduation

Graduation marks more than completion - it's the celebration of transformation. Every graduate who walks across the stage at IZee carries more than a degree - they carry confidence, courage, and the readiness to lead.



INDUSTRY INTEGRATION

At IZee, learning doesn't stop at theory - it evolves through real-world exposure. Our deep industry connect ensures every student understands how businesses truly work and what it takes to succeed in them.



VALUE-ADDED CERTIFICATIONS & WORKSHOPS

IZee's programs are enriched with globally recognized certifications and hands-on workshops that enhance employability. From digital tools to leadership skills, students gain practical expertise directly aligned with industry demands.



INDUSTRIAL VISITS & OUTBOUND LEARNING

Learning at IZee extends far beyond classrooms. Our students experience corporate environments firsthand through industrial visits, outbound training, and field exposure translating theory into tangible understanding.

a



GUEST SESSIONS BY INDUSTRY LEADERS

Regular interactions with CEOs, entrepreneurs, and thought leaders provide students with unmatched insight into the corporate world. These sessions inspire innovation, strategic thinking, and leadership excellence.



EXCLUSIVELY IZee

I-TALK SESSIONS

CONVERSATIONS AND CORPORATE WISDOM

i-Talk brings influential industry professionals face-to-face with students, offering first-hand insights into business realities, leadership journeys, and future trends.





ALUMNI STORIES

Real journeys. Real inspiration.

Our alumni network represents success across industries and continents. Through interactive sessions, they share career experiences, lessons learned, and the spirit of resilience that defines IZee.



Alumini Stories

Celebrating Inspiring Alumni Journeys



IZEE™
BUSINESS SCHOOL
BANGALORE

IZEE™
BUSINESS SCHOOL
BANGALORE



ADMISSIONS

YOUR NEXT BIG MOVE STARTS HERE.

At IZee, we look for students with hunger - to learn, to grow, and to lead. Our admission process goes beyond grades; it's about potential, purpose, and drive. If you're ready to take your next step in business education, we're ready to back you all the way.

Eligibility Criteria

For MBA / PGPM / Hybrid MBA Programs

- Bachelor's degree in any discipline with a minimum of 50% aggregate marks (45% for SC / ST) .
- Valid scores from PG CET / KMAT / CAT / MAT / IZee Aptitude Test.
- Final-year students awaiting results are also eligible to apply.

For Undergraduate Programs (BBA / B.Com / BCA BBA Aviation / LLB / BBA LLB)

- Completion of 10+2 or equivalent from a recognized board.
- Minimum aggregate as prescribed by the university.

Selection Process

Our admissions are merit-based, transparent, and career-driven.

Step 1: Submit your online application through the official website.

Step 2: Shortlisting based on academic performance and entrance exam scores.

Step 3: Personal Interview (online / offline).

Step 4: Offer of Admission & Enrollment confirmation.

Pro tip: Early applicants get priority for scholarships and preferred course slots.



Application Guidelines

Visit www.izeeinstitutions.com and click Apply Now or Book a Free Counselling Session.

Upload the required documents and details

Application review and interview scheduling will follow shortly after submission.

Scholarships & Financial Support

At IZee, we believe great talent should never be held back by financial limits. That's why we offer merit-based scholarships, early admission benefits, and easy EMI plans through partner institutions.

**YOU BRING AMBITION.
WE'LL TAKE CARE OF THE REST.**



CONTACT US

IZee Business School , Plot 325, Part A Bommasandra - Jigani
Link Road , Jigani Post , Anekal Taluk , Bengaluru , Karnataka
560105



www.izeeinstitutions.com

